

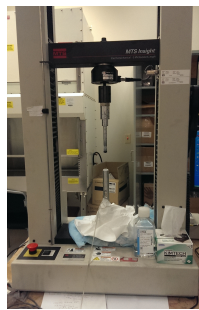
Nguyen Soft Tissues Lab: Latrobe 216A

Last edited: MLC 06/22/2018

Equipment list

Note that many of these items are also listed on the SuppliesNguyenLab.xlsx, which contains purchasing information.

- MTS driven pump system:



*MTS driven syringe pump: MTS Insight 5, 0.01 mm position accuracy, 1 kN load cell, 1.535 mV/V sensitivity.
Syringes: Plunger of a 60 cc plastic syringe attached to MTS crosshead, syringe encased in aluminum and mounted on the base of the MTS machine.*

- Optical (vibration isolation) table:



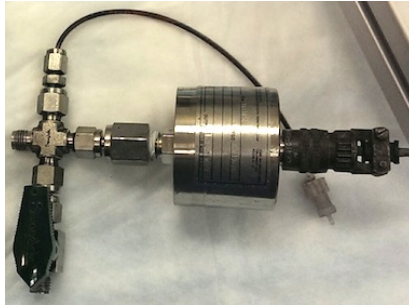
Newport isolation table & breadboard

- Inflation chamber (2 sizes)



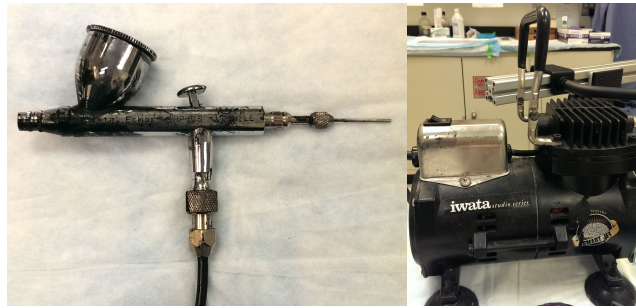
Custom inflation chamber consisting of a top ring, main chamber, and bottom plate.

- Honeywell TJE pressure transducer



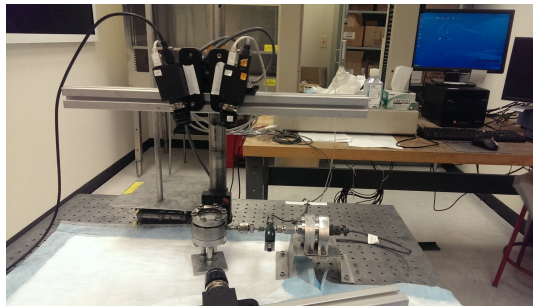
P/N 068-075C-03TJG, 2 psig range, 0.1% full scale accuracy, data converted from analog to digital and written to a log file.

- Airbrush speckling system



Compressor: Iwata Medea, Smart Jet model; Airbrush: Iwata Medea, Eclipse HP-CS model, 0.35-mm needle and nozzle combination; Ink: Higgans black magic, semi-flat finish, waterproof, and acid-free, part 44011

- Cameras



4 Cameras: Point Grey GRAS-20S4M/C, with 1/1.8" image sensors, images collected at 0.5 Hz.

Lenses: Edmund Optics, NT59-870, 16 mm focal length, f/8 aperture

2 Extension tubes: Edmund Optics, C-Mount extension tube (5mm Length), 54-628

- DIC system



Calibration Grid: 1" calibration grid (Correlated Solutions, #055893)

Software: VicSnap 2011 (image capture), Vic3D 2009 (image correlation), both by Correlated Solutions

- Incubator/orbital shaker



Fisher Scientific isotemp incubator; VWR Scientific Products Orbital Shaker 57018 754 980001

- Dissection area



Equipment at the dissection area should consist of a cutting mat and dissection equipment (e.g. dissection scissors, scalpel, tweezers, tissue punches)

- Incubator/orbital shaker

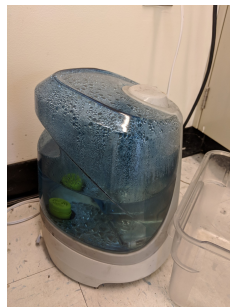


Fisher Scientific isotemp incubator; VWR Scientific Products Orbital Shaker 57018 754 980001

- Manometer



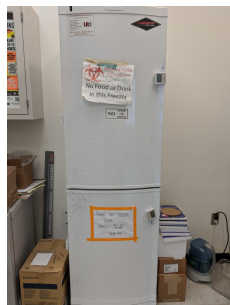
- Humidifier



- Bio-hood



- Bio-fridge & freezer

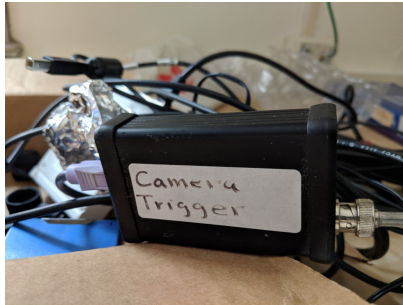


- Lab Computers



Does not connect to internet. Left is for controlling the VicSnap software, right is for controlling MTS machine

- Camera trigger



- Lighting

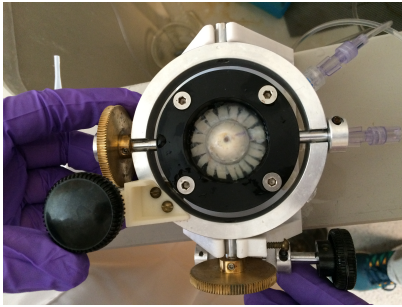
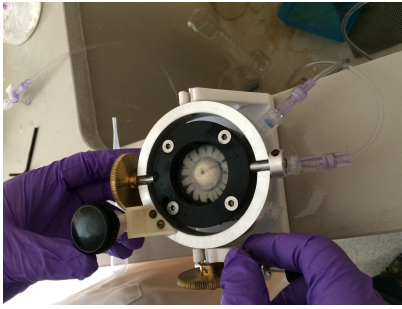


Gooseneck lights and Ring light (Commercial Electric 2700 K T9 Circline CFL Light bulb)

- Miscellaneous tools



- ONH custom inflation holder



Currently stored at JHMI, Wilmer Eye Institute in the Smith building